
HZLY-300A Double Stage Vacuum Oil Purification

Parameter

1. Product technical parameters

Nominal flow: 18000L/h

Net oil capacity: 300L/min

Pumping rate: 2160M³ /h

Working pressure: ≤ 0.4 Mpa

Working oil temperature: 40~70°C

Power supply: 50Hz380V three-phase three-wire

Heating power: 192Kw (adjustable)

Total power rate: 209kw

Operating noise: ≤ 75 dB(A)

Inlet/outlet pipe diameter: DN65

Dimensions: 245×195×225cm

Equipment weight: 2850Kg

2. Product net oil index (new oil)

Oil to be processed

Breakdown voltage: >30kV (spherical pole);

Water content: $\leq 50\text{ppm}$;

Air content: $\leq 10\%$ (volume ratio);

After multiple processes

Breakdown voltage: $>75\text{kV}$ (spherical pole);

Water content: $\leq 5\text{ppm}$;

Air content: $\leq 0.1\%$ (volume ratio);

Acetylene content: 0

Filter accuracy $1\ \mu\text{m}$

III. Introduction of Product Function

remove moisture in the oil removal.

remove dissolved gas in oil.

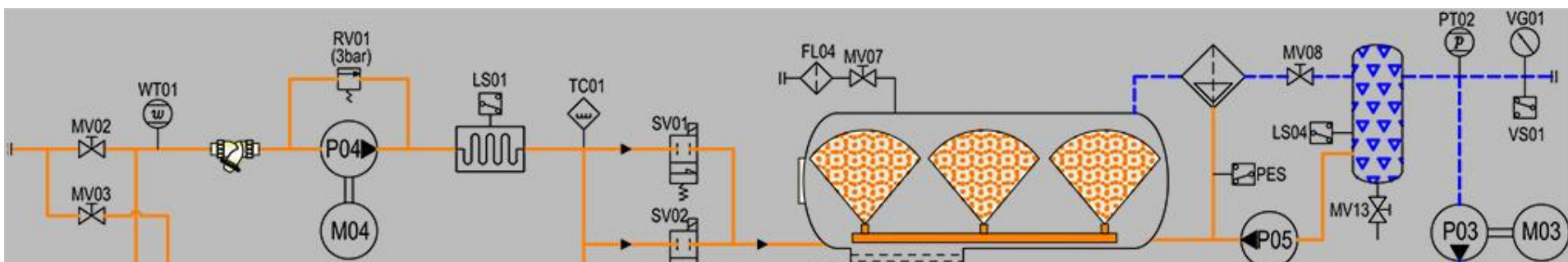
remove the solid particles in the oil removal.

Oil treatment of transformer and vacuum drying of electrical equipment.

On-site heating oil cycle drying of the transformer.

After oil treatment, the 20-60m³ pressure converter can be maintained under vacuum condition

IV. Diagram



Main Spare Parts

No.	Name	Function	
MV01	Outlet oil valve	Control oil outlet	
MV02	Inlet oil valve	Control oil inlet	
MV03	Outlet oil valve	Control oil outlet	
MV04	Inlet oil valve	Control oil inlet	
MV07	Gulp valve	Replenish degassing chamber air when stopping or repairing	
MV08	vacuum valve	Isolate the vacuum chamber when the equipment is used as a vacuum pump set	
MV09	Sampling valve	Oil sample after treatment	
MV10~16	Emptying valve	Empty oil of oil container	
CV01~03	Single direction valve	One-way delivery of oil to prevent return of oil	
FL01	Primary filter	Remove large particles	
FL02	Secondary filter	Remove the impurities above 3 μ m	
FL03	Third filter	Remove the impurities above 1 μ m	
FL04	Air filter	Filtered air particle	
SV01	Main oil inlet	Main valve of liquid level	
SV02	Slave oil inlet solenoid valve	Main valve of liquid level	
LS01	Heating liquid level sensor	Collect the liquid level signal of the heater	
LS02	Low liquid level sensor	Collect the signal of low liquid level	
LS03	High liquid level sensor	Collect the signal of high liquid level	

LS04	Condenser liquid level sensor	Collect the liquid level signal of the condenser	Secondary blowout preventer protection
PES	Foam liquid level sensor	Collect the liquid level signal of the foam	Blowout preventer protection
PT01	Filtration pressure sensor	Collect the signal of filtration pressure	optional
PT02	Vacuum pressure sensor	Collect the signal of vacuum pressure	optional
TT01	Temperature sensor	Collect oil temperature signal	
WT01	Moisture sensor	Detect the moisture content in the oil	optional
OM01	Flowmeter	Detect oil pump flow	optional
PS01	Pressure switch	High pressure protection of oil chamber	
HT	Heater	heating	
P01	Vacuum pump	Primary vacuum	
P02	oil transfer pump	Drain the oil from the vacuum chamber	
P03	Roots pump	Secondary vacuum	
P04	Inlet oil pump	Transfer the oil	optional
Vacuum Chamber	Vacuum separation chamber	Remove the water and gas in the oil	
Cooling Unit	Condensing device	Reduce the temperature of the gas entering the vacuum system	
Foam Eliminator	Pressurized defoamer	Pressurize the foam and turn it into oil	
Buffer	buffer	Temporary Storage of Oil	
VG01	vacuum gauge	Display the vacuum of the degassing chamber	
PG01	pressure gage	Display filter pressure	

IV.Configurations

	NAME	MODEL	QTY	
1	Vacuum pump	HS0200	1 set	
2	Roots pump	ZJP-300 (1080m ³ /h)	1 set	
3	Oil outlet screw pump	GR55	1 set	
4	Oil inlet screw pump		1 set	
5	Oil pump motor	Y-132	1 set	
6	Coarse filter	50 μ m	1 pc	
7	Primary fine filter	5 μ m	1 pc	
8	Secondary fine filter	1 μ m	1 pc	
9	Electric heaters	50KW	2 sets	
10	Spherical valve	DN50 stainless steel	2 pcs	
11	Electromagnetic valve	DN50	1 pc	
12	Electromagnetic valve	DN25	1 pc	
13	Electric		1 set	
14	Frequency converter			
15	Programmable Controllers	S7-200	1 set	
16	Touch screen	10 inch	1 set	
17	Liquid level sensor	GMF-80SL-2A2	4 sets	
18	Liquid level sensor	GMF-80SI-2A2	1 set	
19	Pressure Sensor	PK-510	1 pc	
20	Vacuum gauge	Z-60ZT	1 pc	
21	Pressure gauge	Y-60ZT	1 pc	